

MUSICAL THEATRE PRODUCTIONS' AMATEUR PRODUCTION OF



# JESUS CHRIST SUPERSTAR

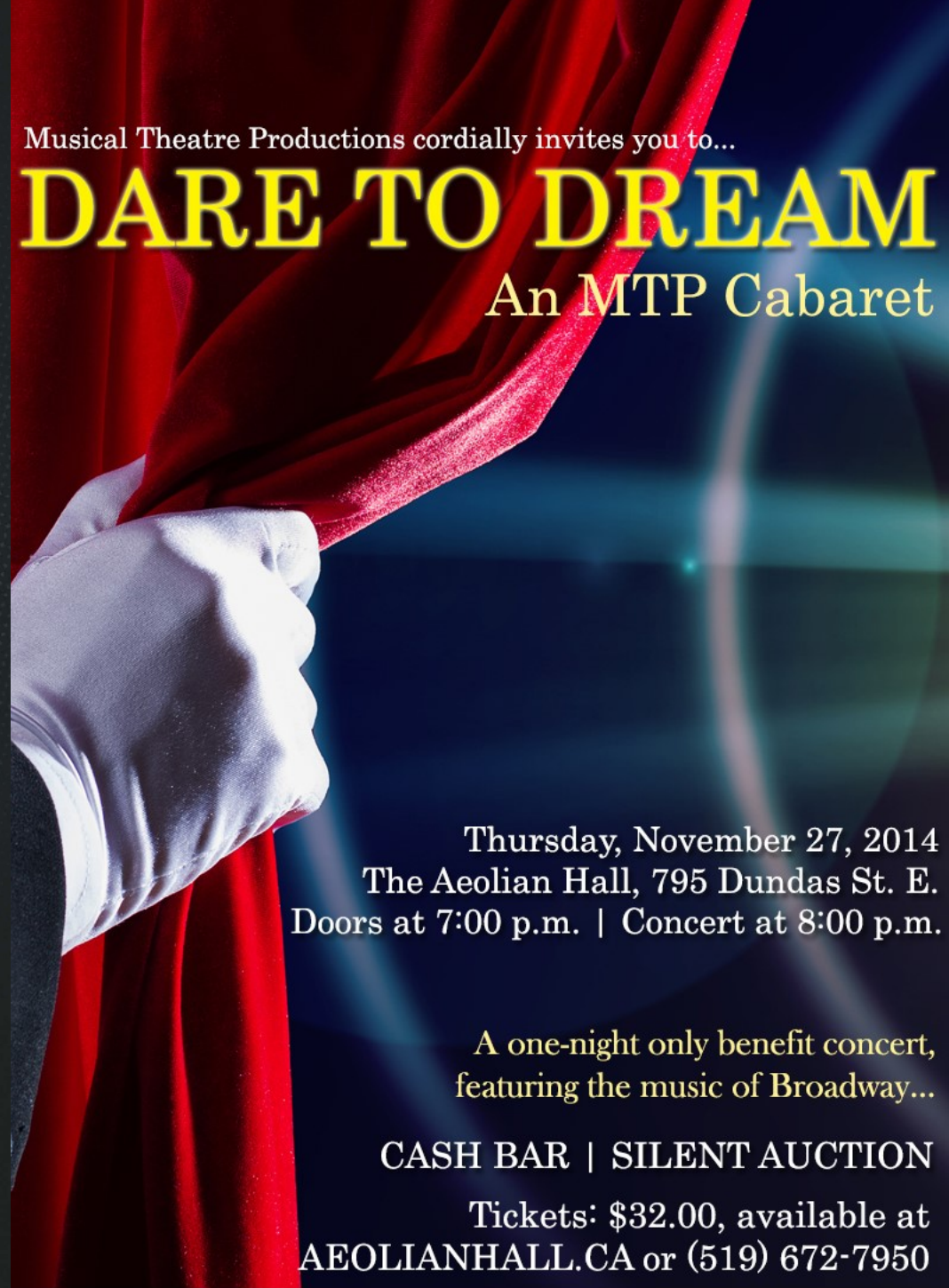
LYRICS BY TIME RICE • MUSIC BY ANDREW LLOYD WEBBER

APRIL 3RD-11TH, 2015 • MCMANUS STUDIO • THE GRAND THEATRE  
TICKETS AVAILABLE AT [WWW.GRANDTHEATRE.COM](http://WWW.GRANDTHEATRE.COM) OR 519-672-8800

Musical Theatre Productions cordially invites you to...

# DARE TO DREAM

An MTP Cabaret



Thursday, November 27, 2014  
The Aeolian Hall, 795 Dundas St. E.  
Doors at 7:00 p.m. | Concert at 8:00 p.m.

A one-night only benefit concert,  
featuring the music of Broadway...

CASH BAR | SILENT AUCTION

Tickets: \$32.00, available at  
[AEOLIANHALL.CA](http://AEOLIANHALL.CA) or (519) 672-7950



Musical  
Theatre  
Productions



[facebook.com/mtplondon](https://www.facebook.com/mtplondon)



[/mtplondon](https://twitter.com/mtplondon)

[www.mtplondon.ca](http://www.mtplondon.ca)

2014-2015 Season  
Proudly Sponsored by  
**IMAGE**  
automotive  
SALES & LEASING





mtplondon.ca

JOE RECCHIA <i>PRESIDENT</i>	KRISTINA BARON-WOODS <i>VICE-PRESIDENT</i>	CHRIS WOOD <i>TREASURER</i>	ANDREW RETHAZI <i>SECRETARY</i>	
CHRIS COSTELLO <i>PAST PRESIDENT</i>	JENNIFER FLORIS	PHIL HALLMAN	LIA KARIDAS	
NICOLE NEWELL	RICK SMITH	TOM SMYTH	DUANE WOODS	ADAM ZESS

## MUSICAL THEATRE PRODUCTIONS presents

### *DARE TO DREAM: An MTP Cabaret*

featuring:

Sarah E Abbott-Carter	Lia Karidas
Aaryn Biro	McKenna Langdon
Patrick Bowman	Nikki Pasqualini
Joshua Clemenger	Emma Ratcliffe
Preston Cooper-Winder	Meaghan Sider
Larissa Duguay	Rick Smith
Art Fidler	Terrington Thibert
Henry Firmston	Kathleen Watkins
Jordan Henry	Isabella Wolder

with Special Guest Performers

**Elaine Overholt**  
**Alison Smyth\***

*\*appears courtesy of the Canadian Actors Equity Association*

### Creative Team

JOE RECCHIA Producer	ANDREW RETHAZI Director/Musical Director	LIA KARIDAS Choreographer	KRISTEN SCOTT Stage Manager	HENRY FIRMSTON & EMMA RATCLIFFE Additional Choreography
-------------------------	---	------------------------------	--------------------------------	---

### The Band

ANDREW RETHAZI Piano	JENNIFER FLORIS Keyboard/Flute	NIK BUCHOWSKI Percussion	JILL SAUERTEIG Cello
-------------------------	-----------------------------------	-----------------------------	-------------------------

## SPECIAL THANKS

Special thanks to The Aeolian Hall, Chris White & Barry Fassina, Kyle Stewart, Original Kids Theatre Company, The Grand Theatre, Kyle Stewart (Poster Design); Anita Watkins (Headshot Photography); Ross Davidson (Production Photography); Chris Costello (Program Design); Elaine Overholt, Alison Smyth and all of our MTP Donors, Sponsors and Volunteers.

## SILENT AUCTION SUPPORTERS

Thank you to our generous supporters: 3M, The Aeolian Hall, Art Fidler, Andrew Rethazi, Blackfriars Bistro & Catering, Blyth Festival, Drayton Entertainment, Ellen Mallett - Elan Knits, The Grand Theatre, London Fringe, Orchestra London, Original Kids Theatre Company, Port Stanley Festival Theatre, The Stratford Festival



WESTERN FILM {THE MCKELLAR ROOM}  
 UCC - WESTERN UNIVERSITY  
 Doors Open: 1:30PM | Movie: 2PM  
 Tickets available at Eventbrite or at the door!

---

---

## WHO'S WHO IN THE CAST

### ISABELLA WOLDER



For MTP: Debut Other: *The Kindness We Can Share* (Benefit Concert for Arts for All Kids), *The Music Man* (Beal Musical Theatre), *Legally Blonde* (Grand HSP). Isabella is so grateful to have been given this wonderful opportunity and wishes MTP the best in their future endeavours.

## THE ARTISTIC TEAM

### JOE RECCHIA



For MTP: President of the Board; *Gypsy*, *Oklahoma!*, *The Drowsy Chaperone*, *FOLLIES*, *The Gondoliers* (Set Designer); *Seussical* (Production Manager); *Nine* (Stage Manager). Other: *Stag and Doe*, *Drinking Alone* (PSFT), *Sullivan & Gilbert*, *Treasure Island*, *The Diary of Anne Frank*, *The Three Musketeers* (LCP). Production Manager for the Original Kids Theatre Company. Thanks to Andrew, my partner in theatre and in life.

### ANDREW RETHAZI



For MTP: *Follies*, *The Drowsy Chaperone*, *Seussical*, *Oklahoma*, *Gypsy* (Musical Director); *The Gondoliers* (Antonio) Other: Musical Direction and Direction for various productions, including *13*, *Les Miserables*, *How to Succeed...*, *Titanic*, *Avenue Q*, *Joseph...Dreamcoat*, *The Secret Garden*, currently *Into the Woods*. Also *Die Fledermaus* (Toronto Operetta Theatre), *The Fantasticks* (Shrew'd Business Collective), *Gianni Schicchi* (AEDO Milan), *Rusalka* (Opera NUOVA). Thanks to my husband and eternal inspiration, Joe Recchia.

---

---

## MESSAGE FROM THE PRESIDENT

Hello, and welcome to the first production of Musical Theatre Productions' 26<sup>th</sup> Season. As we enter a new quarter-century, MTP is excited to begin a new journey with a refocus and return to our roots as a community organization. Over the past six months, we have met with our members and supporters to discover how we can better serve you and to explore new and exciting ways to bring the community together to celebrate our love of the Broadway musical.

We are thrilled to launch our new season with *DARE TO DREAM: An MTP Cabaret*. This exciting benefit concert allows our brilliant local performers to come together to showcase their passion for the stage alongside our very special guest performers who inspire us with their astounding talent and drive. Tonight, we invite you to join us in celebrating MTP's past, present and future. Have a drink and be sure to bid on one of the exciting prizes in our silent auction. All proceeds from this event will be put towards the fulfillment of our mission to serve the community and the continuation of our exciting season.

Our season continues on December 14th with our Sing-Along *White Christmas* at Western Cinema. This social event will be a great way to kick-off the holidays with the entire family, enjoying this classic film filled with memorable tunes and toe-tapping numbers. In the spring, join us at the McManus Studio Theatre as we present the Andrew Lloyd Webber and Tim Rice's mega-hit *Jesus Christ Superstar*. With a bold new vision, this promises to be like no production you have seen before. And finally, join us in June as MTP makes it first foray into the London Fringe. Stay tuned for the exciting reveal of our Fringe production!

In this my first show as producer, I could not be more proud of what MTP has accomplished and of the talented performers who courageously take the stage tonight. They are the proof that any dream that you dare to dream, really can come true!

~Joe Recchia



[mtplondon.ca](http://mtplondon.ca)

## DIRECTORS' NOTE

"Somewhere over the rainbow skies are blue, and the dreams that you dare to dream really do come true." When these words first graced the silver screen 75 years ago in the MGM film *The Wizard of Oz*, it was impossible for audiences of the time to know just how much this sentiment would come to shape the world's hearts and minds. World War II broke out in Europe just 3 weeks after the American release of the film, which would come to establish the importance of freedom and happiness for all people. With this freedom came the ability to pursue one's hopes and dreams in a new, unrestricted way.

There are many different kinds of dreams explored in tonight's concert. Some of our characters, like Fantine in *Les Miserables*, are looking for a better life away from the pain and sorrow that they are facing, while others, like Jo in *Little Women* or Christine in *The Phantom of the Opera*, simply wish to have their loved ones back in their lives. All our characters have one thing in common: they want something so badly that it isn't enough to say what that is...they have to sing about it. And that is a very powerful urge indeed.

So sit back, relax, and let our own "Man in Chair" sweep you away from your everyday troubles with music and dance, into a land of hopes and dreams. "And consider what you wish . . ."

~Andrew Rethazi

---

---

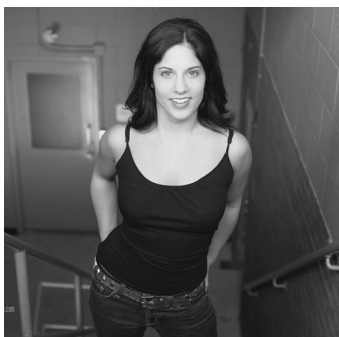


## FEATURED PERFORMERS



**ELAINE OVERHOLT**

Elaine played the title role in Musical Theatre Productions' inaugural show 25 years ago - *Evita!* She is now an internationally sought-after vocal coach, (John Travolta, Zac Efron, and Michelle Pfeiffer, in *Hairspray: The Movie* & Richard Gere, Catherine Zeta-Jones, Renee Zellweger and Queen Latifah in the Oscar-winning movie *Chicago*). Elaine coached Ellen Degeneres in two episodes of her wildly popular TV show. As a soloist/pianist, she has toured internationally and has been a back-up singer for the likes of Ray Charles, Martin Short, Paul Shaffer, Eric McCormack, Tina Turner. Elaine has trained the leads of Broadway or Toronto productions of *Les Miserables*, *Hairspray*, *We Will Rock You*, *Rent* and *The Sound Of Music* and was a judge with Andrew Lloyd Webber on CBC's *How Do You Solve A Problem Like Maria?* Her own TV series *Big Voice* is currently airing on the Oprah Winfrey Network (OWN) in the U.S. and Canada, and her *Big Voice* teaching DVD is selling around the world. Elaine owns Big Voice Studios in downtown Toronto and is a proud Western grad! [www.elaineoverholt.com](http://www.elaineoverholt.com)



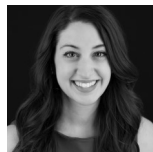
**ALISON SMYTH**

Best wishes MTP! Alison is a member of Canadian Actors' Equity Association and ACTRA. In 2010, she won the Broadwayworld.com Toronto Award "Best Featured Female" for her performance in *Jersey Boys* (Dancap). Other performing credits include: *Hairspray!* (Mirvish), *Evil Dead: The Musical* (Starvox), *Anne of Green Gables - The Musical* (Charlottetown Festival), *Test Drive* (Festival Players), and *Hairspray: The Movie* (New Line Cinema). Most recently, Alison directed *Little Women* for No Strings Theatre. Past productions directed and/or choreographed by Alison are: *Anne of Green Gables - The Musical*, *High School Musical*, *Gays & Dolls*, *Aladdin* and *Oliver!*. Alison is also a certified yoga teacher through the Downward Dog Yoga Centre in Toronto. Find her on social media by visiting [www.alisonsmyth.com](http://www.alisonsmyth.com).

## WHO'S WHO IN THE CAST

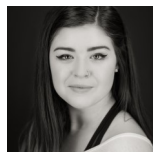
*Cabaret* (Fuse Productions), Gary in *Flux* (Theatre For The Cure), Clown 2 in *The 39 Steps* (LCP), and upcoming Harry in *Snow White* (GLT)

### LIA KARIDAS



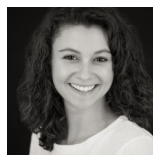
For MTP: *Oklahoma!*, *Bat Boy* (Costume Design), *Zorba* (Director/Choreographer) Other: *Mr. Burns* (Wortley Rep), *Little Shop of Horrors* (Iglesia), *Sweeney Todd* (Pacheco), *Legally Blonde* (Theatre Western), *Urinetown* (A.F.E.W. Good Players), *Uncle Vanya* (UWO), instructor, performer and board member for London Greek Dance, Special Events Coordinator at The Grand Theatre. Lia thanks MTP for letting her sing alongside these fine performers, and hopes that everyone enjoys the show!

### McKENNA LANGDON



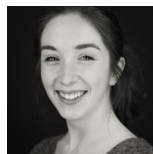
For MTP: Debut Other: *Gays and Dolls* (OKTC), *Cats* (OKTC), *How to Succeed ...* (OKTC), Sister Mary Hubert in *Nunsense* (OKTC), Aunt March in *Little Women* (OKTC), *The Secret Garden* (OKTC), Dorothy in *The Wizard of Oz* (Saunders Secondary School), and music theatre student at Saunders Secondary School. McKenna is honoured to be performing with so many talented individuals and can't wait to be a part of MTP's future productions.

### NIKKI PASQUALINI



For MTP: Debut Other: Rizzo in *Grease* (Believe), Snoopy in *You're A Good Man Charlie Brown* (Sheridan College), Gaspard in *A Tale of Two Cities* (The Singer's Theatre), *The Sound Of Music* (Drayton Entertainment). Originally from Kitchener, Nikki is studying voice at Western University and is incredibly excited to be part of her first MTP show!

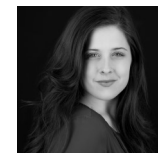
### EMMA RATCLIFFE



For MTP: *Oklahoma!* Other: *The Great Gatsby* (Beal Drama), *The Music Man* (Beal Musical Theatre), *Songs For a New World* (South Musical Theatre), *The Crucible* (Passionfool), *The Miracle Worker* (South Drama). Emma would like to thank her friends and family for supporting her, and MTP for giving her this opportunity to perform with

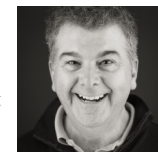
such talented people. She hopes that everybody enjoys the show!

### MEAGHAN SIDER:



For MTP: Laurey in *Oklahoma!* Other: *Anything Goes*, *As You Like It* (Grand Theatre); *Anne of Green Gables*, *25th Annual Putnam County Spelling Bee*, *Nunsense* (Mother Teresa Catholic Secondary School); Director, *Dear Edwina Jr.* (Original Kids); Upcoming: Opera Gala (UWOpera). Meaghan is currently completing her fourth year undergraduate degree with a Bachelor of Music in Voice Performance under Rachel Mallon. She thanks MTP for yet another wonderful opportunity and hopes everyone enjoys the show!

### RICK SMITH



For MTP: After being involved in a number of MTP productions, this is my first performance in a cabaret. Most recently I directed *Gypsy* and the *Drowsy Chaperone* but have been seen in *Bye, Bye, Birdie*, *The Gondoliers*, *Anything Goes*, *South Pacific*, *The Music Man* and *42nd Street*. Thank you to my family for their encouragement and support.

### TERRINGTON THIBERT



For MTP: Gertie Cummins in *Oklahoma!* For Alexander Singers and Players: Eliza's Maid/Angry woman in *My Fair Lady*, Jingle Singer in *It's a Wonderful Life: a Radio Show*, Ensemble in *Man of LaMancha*. University for Windsor: Pitti Sing in *Excerpts from The Mikado*, Second Lady in *Excerpts from The Magic Flute*. Thanks to Bill, Mom, Dad and my wonderful friends for your love and support!

### KATHLEEN WATKINS



For MTP: Whoville citizen in *Seussical*, Ensemble in *Zorba*, Dainty June in *Gypsy*. Other: Rosemary in *How To Succeed ...*, Reverend Mother in *Nunsense*, Sorority Sister in *Legally Blonde*, Lina Lamont in *Singin' in the Rain*. Kathleen thanks everyone for their hard work and dedication. She is thrilled to be in another MTP show!

Proud Sponsor of MTP's 2014-2015 Season

# IMAGE automotive SALES & LEASING

1187 DUNDAS STREET EAST • LONDON • ONTARIO

Mike 519-659-3077 EMAIL [imageautomotive@gmail.com](mailto:imageautomotive@gmail.com)

## WHO'S WHO IN THE CAST

### SARAH E ABBOTT-CARTER



For MTP: *Songs for a New World*, *Gypsy* Rose Lee in *Gypsy* Other credits: Velma Kelly in *Chicago* (Pacheco Theatre), Sally Bowles in *Cabaret* (Fuse Theatre Productions). Director at

Original Kids Theatre Company including *Macbeth*, *Singin' in the Rain*, and *Nunsense: The MEGA Musical*. Sarah has a BFA Acting degree from the University of Windsor and currently teaches drama in St. Thomas, is an instructor at AK Arts Academy and is directing at London District Christian Secondary School. Special thanks to her students, friends, family and husband for all of their loving support.

### AARYN BIRO

For MTP: Debut! Other: *Fred! The Musical* (Fred), *South Pacific* (Ensemble), *Sweeney Todd* (Ensemble), *The Three Dollar Opera* (MacHeath), *Twelfth Night* (Sebastien). Aaryn enjoys dance, guitar and piano in his spare time. He is currently in his first year at

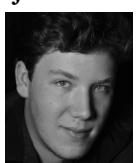
Western and is excited to be a part of the Dance Force team. Aaryn thanks MTP for letting him sing alongside these wonderfully talented performers, and hopes that everyone enjoys the show!

### PATRICK BOWMAN

For MTP: Will Parker in *Oklahoma!* Other Theatre: Roger in *Rent*, George in *Aspects of Love*, (Theatre Aquarius), *Canada Sings!* (Victoria Playhouse), Gilbert in *Anne* (Village Theatre), Joe

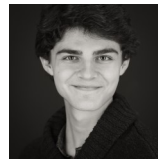
Crowell in *Our Town* (Hamilton Players Guild) Opera: Schaunard in *La Bohème*, Cascada in *The Merry Widow*, (UWO Opera), Marco in *Gianni Schicchi*, *Die Zauberflöte* (AEDO, Italy) So pleased to work with so many new and familiar faces! Enjoy!

### JOSHUA CLEMENGER



For MTP: Curly in *Oklahoma!*, *Songs For a New World* Other: City Workers in *Love*, *The Merry Widow*, *Die Fledermaus*, *South Pacific* (UWO Opera), *Chess*, *Miss Saigon*, *Grease* (Theatre Aquarius). Music instructor at the LYTE Program and Chorister at New St. James, he is excited to work with MTP again!

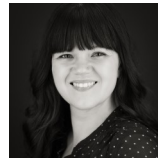
### PRESTON COOPER-WINDER



For MTP: Debut. Other: *Willy Wonka and the Chocolate Factory* (PCI). Preston is a student at Parkside Collegiate Institute and is delighted to be appearing in his first MTP show and

performing in his first production outside of school. Special thanks to Stephen Sondheim for his inspiration.

### LARISSA DUGUAY



For MTP: *Iolanthe*, *Oklahoma!* Past theatrical appearances include: *The Sound of Music*, *Taming of the Shrew*, and *Chess*. She also works as Musical Director with Original Kids Theatre

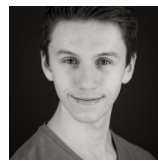
Company and is a member of the Bach Festival Chamber Choir. She wishes to thank her husband, Adam, for his endless support and encouragement.

### ART FIDLER



For MTP: Founding member of London Musical Theatre (now MTP), *Evita*, *42nd Street*, *Music Man*, *Chess*, *The Pajama Game*, *Oklahoma!* Other: I've enjoyed decades of theatre at school in Strathroy, in London at Western, Oakridge S. S., and lots of community theatre groups, including 24 years with Original Kids Theatre. I believe, as Kurt Vonnegut said, "There's no easier way to meet nice people than to be in a play with them."

### HENRY FIRMSTON



MTP: Debut! Other: Gomez in *The Addams Family*, Kyle the UPS Guy in *Legally Blonde*, *My Fair Lady*, *Footloose* (HSP: The Grand Theatre); Professor Harold Hill in *The Music Man* (Beal Musical Theatre), Tom of Warwick in *Camelot* (Huron County Playhouse). Henry is thrilled to join all of these amazing performers on stage!

### JORDAN HENRY



For MTP : Underling in *The Drowsy Chaperone*, Jocko et. al. in *Gypsy*, *Songs For A New World* Other : Tobias in *Sweeney Todd* (Pacheco Theatre), Ethan in *The Full Monty*, Emcee in

## SUPPORT MTP & OUR SHOWS

MTP has created an individual giving program to ensure we are able to continue producing the high quality and large scale musicals you love! We rely on the generous donations of our patrons to support the ongoing operations and show productions we stage during our season.

Our shows offer an outstanding opportunity for all theatre lovers to be involved, whether on the stage or off. Please consider a contribution to MTP when planning your donations.

Giving Level	Gift Amount	Donor Benefits
Cast Sponsor	\$50.00+	Your name listed in our programmes Your name listed on our website One (1) invitation to attend a dress rehearsal Income tax receipt
Artistic Sponsor	\$250.00+	Your name listed in our programmes Your name listed on our website Two (2) complimentary tickets to any performance Two (2) Invitations to all opening night parties Two (2) invitations to attend a dress rehearsal Income tax receipt (\$200.00)
Rehearsal Sponsor	\$500.00+	Your name listed in our programmes Your name listed on our website Four (4) complimentary tickets to any performance Two (2) invitations to all opening night parties Two (2) invitations to attend a dress rehearsal Income tax receipt (\$400.00)
Scene Sponsor	\$1000.00+	Your name in our production programmes Your name/logo listed on our website Six (6) complimentary tickets to any performances Two (2) invitations to all opening night parties Two (2) invitations to attend a dress rehearsal Income tax receipt (\$850.00)

### SEASON SPONSOR

Image Automotive Sales & Leasing

### SCENE SPONSORS

Joel Dell & Becky Lenko  
OE Canada Inc.

### REHEARSAL SPONSOR

London Community Players  
Chris and Laura Wood

### ARTISTIC SPONSOR

Chris Alleyne & Chris Costello  
Anne Cuthbert  
Michelle de Kort  
Nicole Newell  
Andrew Rethazi  
Rick Rogozinski  
Rick Smith  
Jane Swatridge  
TD Bank

### CAST SPONSOR

Kristina Baron-Woods  
Art Fidler  
Joie Martin  
Mark Speechley

Donations may be made in the following ways:

- Online: [www.mtplondon.ca](http://www.mtplondon.ca)
- During a show: Cheque/Cash payment at our 50-50 table
- Email: money transfer to [sponsor@mtplondon.ca](mailto:sponsor@mtplondon.ca) [use password: mtpdonor]

Gifts may be made in any amount and are greatly appreciated.

## ACT I SONGS

Prologue <i>(Into the Woods)</i>	.....	Full Company
The Surrey with the Fringe on Top <i>(Oklahoma!)</i>	.....	Henry Firmston, Nikki Pasqualini
I Don't Know How to Love Him <i>(Jesus Christ Superstar)</i>	.....	Isabella Wolder
Lullaby of Broadway <i>(42nd Street)</i>	.....	Art Fidler, Isabella Wolder, Patrick Bowman, Henry Firmston, McKenna Langdon, Nikki Pasqualini, Emma Ratcliffe, Meaghan Sider
Oh is There Not One Maiden Breast <i>(Pirates of Penzance)</i>	.....	Joshua Clemenger, Female Company
Times Like This <i>(Lucky Stiff)</i>	.....	Terrington Thibert
Some Things are Meant to Be <i>(Little Women)</i>	.....	Meaghan Sider, Sarah E Abbott-Carter
Two Nobodies in New York <i>(title of show)</i>	.....	Preston Cooper-Winder, Patrick Bowman
The Light in the Piazza <i>(The Light in the Piazza)</i>	.....	Emma Ratcliffe
N.Y.C. <i>(Annie)</i>	.....	Rick Smith, Lia Karidas, Isabella Wolder, Sarah E Abbott-Carter, Aaryn Biro, Patrick BowmaN, Preston Cooper-Winder, Larissa Duguay, Henry Firmston, McKenna Langdon, Nikki Pasqualini, Emma Ratcliffe, Meaghan Sider, Terrington Thibert, Kathleen Watkins
Somewhere That's Green <i>(Little Shop of Horrors)</i>	.....	Kathleen Watkins
High Flying Adored <i>(Evita)</i>	.....	Patrick Bowman, Lia Karidas
Solla Sollew <i>(Sensical)</i>	.....	Jordan Henry, McKenna Langdon, Aaryn Biro, Kathleen Watkins, Patrick Bowman, Preston Cooper-Winder, Henry Firmston, Lia Karidas, Nikki Pasqualini, Terrington Thibert
I'm Still Here <i>(Follies)</i>	.....	Larissa Duguay, Sarah E Abbott-Carter, Terrington Thibert

~ There will be one 15 minute intermission ~



The use of any recording device, either audio or video, and the taking of photographs, either with or without flash, is strictly prohibited. Please turn off all cell phones, beepers and watches.

## ACT II

### SPECIAL GUEST PERFORMANCES

Don't Rain on My Parade <i>(Funny Girl)</i>	.....	Elaine Overholt
Don't Cry for Me Argentina <i>(Evita)</i>	.....	Elaine Overholt
Hold On <i>(The Secret Garden)</i>	.....	Alison Smyth <i>appears courtesy of the Canadian Actors Equity Association</i>

### ACT II SONGS

The Wells Fargo Wagon <i>(The Music Man)</i>	.....	Full Company
Corner of the Sky <i>(Pippin)</i>	.....	Henry Firmston
I Dreamed a Dream <i>(Les Miserables)</i>	.....	Sarah E Abbott-Carter
Will He Like Me? <i>(She Loves Me)</i>	.....	Emma Ratcliffe
America <i>(West Side Story)</i>	.....	Lia Karidas, McKenna Langdon, Nikki Pasqualini, Emma Ratcliffe, Meaghan Sider, Isabella Wolder
More I Cannot Wish You <i>(Guys and Dolls)</i>	.....	Art Fidler, with Kathleen Watkins
Where in the World? / How Could I Ever Know? <i>(The Secret Garden)</i>	.....	Jordan Henry, Larissa Duguay
The Proposal/The Night was Alive <i>(Titanic)</i>	.....	Joshua Clemenger, Patrick Bowman
Wishing You Were Somehow Here Again <i>(Phantom of the Opera)</i>	.....	Meaghan Sider
Someone Else's Story <i>(Chess)</i>	.....	Terrington Thibert, with Henry Firmston, Emma Ratcliffe
Climb Ev'ry Mountain <i>(The Sound of Music)</i>	.....	Larissa Duguay, Full Company
Over the Rainbow <i>(The Wizard of Oz)</i>	.....	Full Company